

INTERNATIONAL SYMPOSIUM ON EARTHQUAKES AND DAMS

Vol. 1

20 May 1987 Beijing China

INTERNATIONAL SYMPOSIUM
ON EARTHQUAKES AND DAMS

Vol. 1

20 MAY 1987 Spring 1987

**International Symposium
on Earthquakes and Dams
Beijing 1987**

FOREWORD

For the first time in the history of ICOLD, so far I know, an international one-day scientific symposium will be organized in the frame of an ICOLD Executive Meeting. (1)

It is my first wish to congratulate the Chinese National Committee on Large Dams for having taken the decision of such an innovating step even before the Constitution of ICOLD was amended in this sense.

I then wish to thank so much the Organizing Committee for having done the necessary efforts and taken the needed measures to put together a very attractive program. For sure, symposia of this kind will increase by much the interest of the members of ICOLD National Committees for the ICOLD Executive Meetings and in this way strengthen the bonds between them and our Organization.

The theme of this first Symposium will be "Earthquakes and Dams". No doubts this theme is of the utmost importance in the field of design and analysis of dams for matter of construction as well as for that of operation of the same. This field is also one of those in dam engineering, where a lot of investigations are still to be done. It is also believed that many developments and achievements are to be expected for the next years. I am sure that this "Beijing Symposium" will give an important contribution in this direction.

I wish to express my hope, that not only very sophisticated computational methods will be dealt with, but that also some practical information will be shown to the engineers daily involved in dams, so that the problems with earthquakes may be broadly understood the world over. So far I know from some summary of papers to be pres-

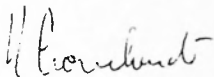
(1) *To be remembered are in any case: The Symposium in Rio before the 1982-ICOLD-Congress and the two half-day sessions on technical problems at the Executive Meetings in Tokyo, 1984 and Jakarta, 1986.*

ented, this will be the case.

I hope also that this Symposium may be of some help to our ICOLD Committee on "Seismic Aspects of Dams" which has an important task to fulfil.

My last quite pleasant duty is to warmly thank all those who in any way took part or will take part in the organization of the Meeting and specially the authors of the papers, the experts and the chairmen.

I wish a good success to this first ICOLD Symposium in Beijing!



Giovanni Lombardi
President of ICOLD

International Symposium
on Earthquakes and Dams
Beijing 1987

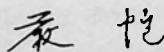
MESSAGE FROM THE CHINESE NATIONAL COMMITTEE ON LARGE DAMS

China is a country with high seismicity. As early as 1189 B. C. earthquake activities were recorded in history. Recent years have witnessed more frequent earthquakes in China. There were 42 earthquakes with magnitudes greater than 7 from 1949 to now.

Some reservoirs and large dams are located in regions of strong earthquakes. No failure was found, but many problems were discovered.

With the rapid development of hydroelectric power and water resources works there are many large dam projects in design or under construction in earthquake regions in China. Therefore the understanding of the response of different types of large dams under earthquake action and the determination of economical and reasonable measures to resist earthquake are of great value to us.

This is why we select the topic "Earthquakes and Dams" for our one-day International Symposium during the 55th ICOLD Executive Meeting in Beijing, and we will discuss the response of concrete and embankment dams. In this Proceedings 39 papers from 9 countries are included. We believe that such exchange of experiences will be of value to the design of large dams to resist earthquake actions.



Yan Kai
Chairman CHINCOLD

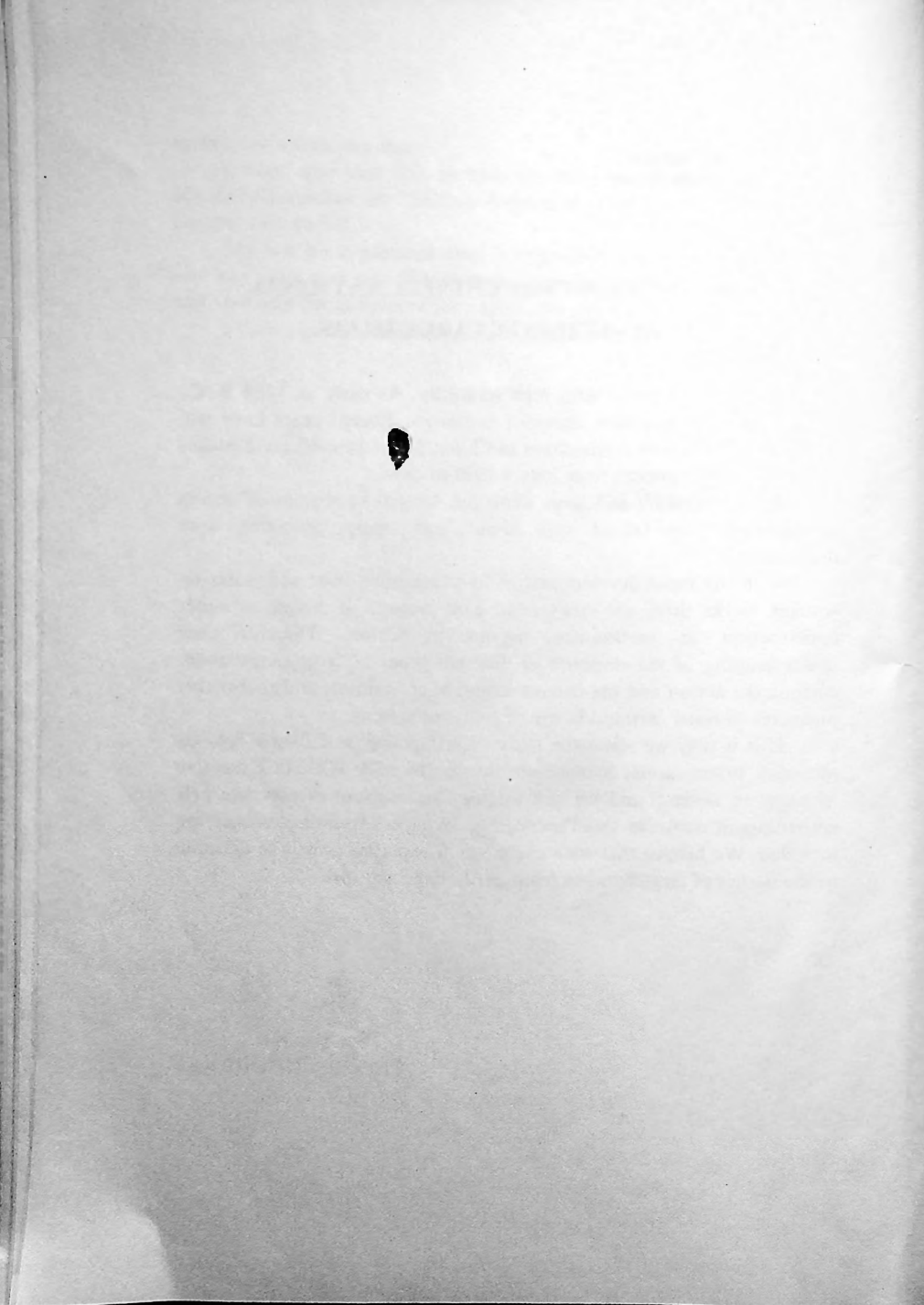


TABLE OF CONTENTS OF PAPER

QUESTION I—RESPONSE OF CONCRETE DAMS	Page
R.1. CHEN Houqun, HOU Shunzha, YANG Dawei (<i>China</i>) STUDY ON ARCH DAM—RESERVOIR INTERACTION.....	(1)
R.2. CHEN Houqun, YANG Dawei, HOU Shunzha (<i>China</i>) PRELIMINARY EXPERIMENTAL STUDY ON COMPRESSIBILITY OF RESERVOIR WATER	(13)
R.3. Toshio Fujii, Kenichiro Egawa, Ikuo Katayama (<i>Japan</i>) SEISMIC RESPONSE OF NAGAWADO ARCH DAM.....	(25)
R.4. Isao NAGAYAMA, Shigehar JIKAN (<i>Japan</i>) STUDY ON DYNAMIC BEHAVIOR OF CONCRETE DAM DURING EARTHQUAKE WITH HYDRODYNAMIC INTERACTION.....	(39)
R.5. Hiroo Shiojiri (<i>Japan</i>) EARTHQUAKE ANALYSIS AND RESPONSE OF CONCRETE GRAVITY DAM INCLUDING DAM—WATER—FOUNDATION INTERACTION EFFECTS	(54)
R.6. YU Xizhe, DING Jihui (<i>China</i>) FLUID—CANTILEVER STRUCTURE—ELASTIC FOUNDATION INTERACTION.....	(69)
R.7. FU Zuoxin (<i>China</i>) RESERVOIR BOTTOM CONDITION AND HYDRODYNAMIC PRESSURE ON DAMS.....	(80)
R.8. F.G. Defazio, Mike C. Lin (<i>U.S.A.</i>) HYDRODYNAMIC FORCES ON GATES DUE TO EARTHQUAKES.....	(90)
R.9. Ashok K. Chugh (<i>U.S.A.</i>) HYDRODYNAMIC PRESSURES ON DAMS BY THE BOUNDARY ELEMENT METHOD.....	(105)
R.10. Anil K. Chopra (<i>U.S.A.</i>) HYDRODYNAMIC AND FOUNDATION INTERACTION EFFECTS IN EARTHQUAKE RESPONSE OF CONCRETE DAM	(120)

- R. 11. LIN Gao, CHEN Genda (*China*)
DAM-FOUNDATION INTERACTION EFFECT ON EARTH-
QUAKE RESPONSE OF CONCRETE GRAVITY DAMS..... (135)
- R. 12. LIU Haowu (*China*)
A COMPARATIVE STUDY OF EARTHQUAKE INPUT MECH-
ANISMS FOR DYNAMIC ANALYSIS OF CONCRETE DAMS.... (147)
- R. 13. LU Guanping, CHEN Houci, XIE Jingjean, CHEN Houqun (*China*)
MODEL IDENTIFICATION OF ARCH DAM BY TRANSIENT
EXCITATION..... (158)
- R. 14. ENEL / CRIS-ISMES / DPD (*Italy*)
AN OVERVIEW OF IN-SITU DYNAMIC TESTS ON CONCRET
DAMS..... (171)
- R. 15. Bernard TARDIEU, Jacques BERTRAND (*France*)
CALCULATION OF ARCH DAMS SUBJECTED TO EARTH-
QUAKES ANTISEISMIC DESIGN OF ARCH DAMS..... (187)
- R. 16. B. Gilg, W. Indermaur, F. Matthey, O. Pedro, M. Cruz Azevedo, E. Ferreira
(*Switzerland, Portugal, Greece*)
SPECIAL DESIGN OF STENO ARCH DAM IN GREECE IN RE-
LATION WITH POSSIBLE FAULT MOVEMENTS..... (202)
- R. 17. ZHANG Xianhong, MAI Jiaxuan (*China*)
VIBRATION-RESPONSE OF ARCH DAMS WITH TIME-LAG
BETWEEN ABUTMENTS..... (219)
- R. 18. V. N. Lombardo, L. P. Mikhailov, I. V. Semenov (*U. S. S. R.*)
STUDIES AND DESIGN OF EARTHQUAKE-RESISTANT
CONCRETE DAMS..... (233)

QUESTION 2-RESPONSE OF FILL DAMS

- R. 19. WANG Wenshao (*China*)
LESSONS FROM EARTHQUAKE DAMAGES OF EARTH DAMS
IN CHINA..... (243)
- R. 20. SHEN Zhujiang (*China*)
ANALYSES OF SEISMIC PORE PRESSURE AND PERMANENT DE-
FORMATION OF AN EARTH DAM..... (258)

- R.21. Kyohei BABA, Masaaki NAGAI (*Japan*)
DYNAMIC FAILURE TEST OF MODEL EMBANKMENT.....(271)
- R.22. Masami YASUNAKA, Tadatsugu TANAKA, Shigeru TANI (*Japan*)
LIQUEFACTION ANALYSES FOR EMBANKMENT DAMS..... (286)
- R.23. ZHANG Kexi, LI Mingzai, LI Yun, CHANG Xiangqian (*China*)
ANALYSES OF EARTHQUAKE-INDUCED PERMANENT
DEFORMATIONS OF EARTH DAMS.....(301)
- R.24. Norihisa MATSUMOTO, Nario YASUDA, Masahiko OHKUBO,
Shoji ARAKAWA (*Japan*)
DYNAMIC SHEAR STRENGTH OF COARSE GRAINED
GRANULAR MATERIALS.....(312)
- R.25. T. YONEZAWA, Y. UEMURA, I. OHMOTO (*Japan*)
AN ANALYSIS OF THE DYNAMIC BEHAVIOR OF A
ROCKFILL DAM DURING AN EARTHQUAKE WITH
WAVES OF HIGH FREQUENCY.....(324)
- R.26. WANG Kecheng, LIU Gongren, YAN Dejian, GUO Tiande (*China*)
SOME NEW DISCOVERIES IN THE MODEL TESTS ON THE
EARTHQUAKE RESISTANCE OF ROCKFILL DAMS..... (339)
- R.27. T. HASEGAWA, K. UCHIDA, M. KIKUSAWA (*Japan*)
EVALUATION OF SEISMIC STABILITY OF EMBANKMENT
DAM..... (350)
- R.28. AVRIL Thierry, FRY Jean Jacques (*France*)
EVALUATION OF RESILIENT AND PERMANENT
DEFORMATIONS AS WELL AS PORE PRESSURE GENERA-
TION OF EARTH AND ROCK FILL MATERIALS UNDER
CYCLIC LOADING.....(365)
- R.29. Tatsuo OHMACHI (*Japan*)
ROCKFILL SLIDING INITIATED BY GROUND SHAKING..... (379)
- R.30. XU Zhiying, Zhou Jian (*China*)
EARTHQUAKE-RESISTANT ANALYSIS OF EARTH AND TAI-
LING DAMS.....(393)
- R.31. Y. OHNE, H. TATEBE, K. NARITA, T. OKUMURA (*Japan*)
DISCUSSIONS ON SEISMIC STABILITY OF SLOPES FOR ROCK-

FILL DAMS.....	(407)
R.32. Lelio H. Mejia, H. Bolton Seed (<i>U.S.A.</i>) TWO-DIMENSIONAL DYNAMIC RESPONSE ANALYSIS OF THREE-DIMENSIONAL DAMS.....	(418)
R.33. YU Peiji, LIANG Yongxia, QIN Weiqin (<i>China</i>) DYNAMIC PROPERTIES OF MATERIALS FOR LUBUGA ROCKFILL DAM.....	(433)
R.34. JIN Chongpan (<i>China</i>) DYNAMIC ANALYSIS OF A ROCKFILL DAM.....	(444)
R.35. Hiroyuki Watanebe (<i>Japan</i>) DYNAMIC FAILURE TESTS ON MODEL EMBANKMENTS AND DAMS OF SOILS AND NUMERICAL SIMULATION OF THEM WITH NON-LINEAR FINITE AND JOINT ELEMENT METHODS.....	(457)
R.36. HAN Guocheng, KONG Xianjing (<i>China</i>) STUDIES ON DYNAMIC EXPERIMENTS OF EMBANKMENT DAM MODELS.....	(471)
R.37. Choshiro TAMURA, Shunzo OKAMOT (<i>Japan</i>) ON EFFECTS OF VERTICAL GROUND MOTION ON STABI- LITY OF FILL-TYPE DAMS.....	(486)
R.38. Paolo Bertacchi (<i>Italy</i>) ENEL CONTRIBUTION TO THE ASSESSMENT OF LIQUEFAC- TION RISK FOR DAM FOUNDATIONS.....	(501)
R.39. Jacques BERTRAND (<i>France</i>) SIMPLIFIED METHODS FOR OPTIMUM ANTISEISMIC DESIGN OF EMBANKMENT DAMS AND REINFORCED ROCKFILL DAMS.....	(519)

PAPERS ON QUESTION 1
RESPONSE OF CONCRETE DAMS