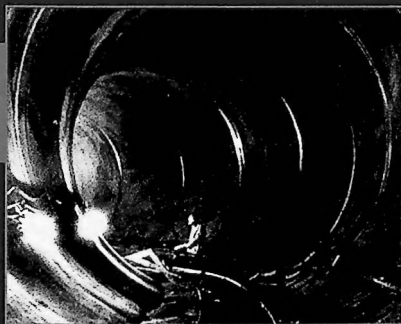


APR. 1995 VOL. 121 NO. 4
ISSN 0733-9410
CODEN: JGENDZ

JOURNAL OF GEOTECHNICAL ENGINEERING



AMERICAN SOCIETY OF CIVIL ENGINEERS
GEOTECHNICAL ENGINEERING DIVISION

TECHNICAL PAPERS

- Performance of Axially Loaded Steel Pipe Piles Driven in Soft Rock
Tatsunori Matsumoto, Yuji Michi, and Tadao Hirano 305
- Empirical Prediction of Liquefaction-Induced Lateral Spread
Steven F. Bartlett and T. Leslie Youd 316
- Simulating Performance of GRS-RW by Finite-Element Procedure
Hoe I. Ling, Fumio Tatsuoka, and Masaru Tateyama 330
- Down-Hole Collapse Test System
Sandra L. Houston, Hisham H. H. Mahmoud, and William N. Houston 341
- Lotung Downhole Array. I: Evaluation of Site Dynamic Properties
A.-W. Elgamal, M. Zeghal, H. T. Tang, and J. C. Stepp 350
- Lotung Downhole Array. II: Evaluation of Soil Nonlinear Properties
M. Zeghal, A.-W. Elgamal, H. T. Tang, and J. C. Stepp 363

DISCUSSIONS

- Rational Polynomial Technique in Slope-Reliability Analysis
R. N. Chowdhury and D. W. Xu
By Claudio Cherubini. By J. He. By K. S. Li. Closure by authors 380
- Swell-Shrink Behavior of Compacted Clay
Robert W. Day
By Suresh P. Parashar, K. S. Wong, and V. Choa. Closure by author 385
- Penetration Resistance Value along Compaction Curves
Alain G. Faure and Jose D. Viana Da Mata
By Robert W. Day 387
- Performance of Embankment Stabilized with Vertical Drains on Soft Clay
B. Indraratna, A. S. Balasubramaniam, and P. Ratnayake
By D. Russell and C. C. Hird. By Siew-Ann Tan. Closure by B. Indraratna 389

contents continued on back cover

DISCUSSIONS *contents continued from front cover*

1988 Armenia Earthquake. II: Damage Statistics versus Geologic and Soil Profiles. M. K. Yegian, V. G. Ghahraman, and G. Gazetas
By G. A. Athanasopoulos. By Robert W. Day. Closure by authors 395

Reinforcing Sand with Strips of Reclaimed High-Density Polyethylene. Craig H. Benson and Milind V. Khire
By Ashraf M. Ghaly. Closure by authors 399

Interface Shear-Strength Properties of Roughened HDPE. Marc E. Orman
By Robert W. Day. Closure by author 401

Tensile and Compressive Shaft Capacity of Piles in Sand. Anthony De Nicola and Mark F. Randolph
By Lianyang Zhang and Shad M. Sargand. Closure by authors 403

ERRATA 406



**American Society
of Civil Engineers**

UNITED ENGINEERING CENTER
345 East 47th Street
NEW YORK, N.Y. 10017-2398

SECOND CLASS

00106515-0000 001
PIERO SERBANELLI
PIERO SERBANELLI
3/5 SANTA VALERIA
20123 MILANO
ITALY

619204

0015



0733-9410(199504)121:4:1-P