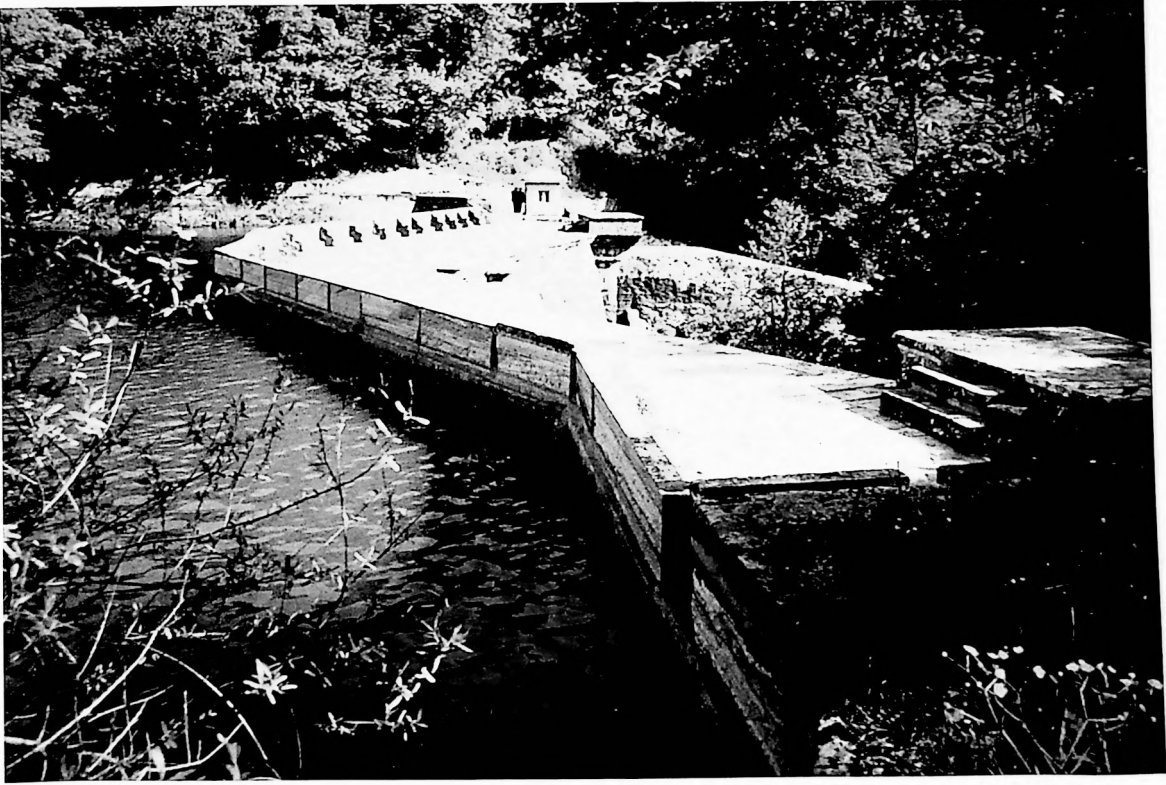


HISTORICAL DAMS IN TURKEY



Prof. Dr. Ünal ÖZİŞ

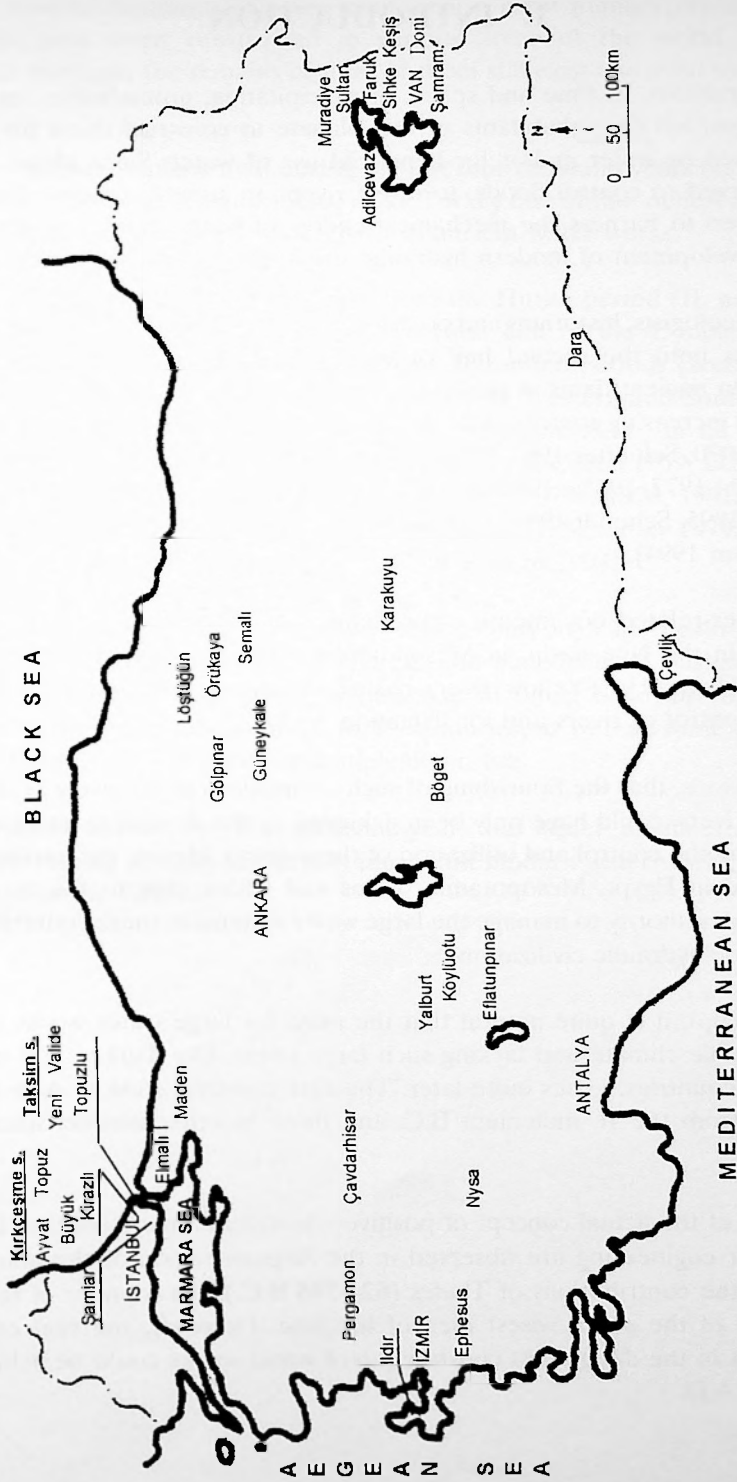
Ankara - 1999

CONTENTS

FOREWORD	1
CONTENTS	4
1. INTRODUCTION	8
2. HISTORICAL DAMS IN CENTRAL ANATOLIA IN THE HITTITE PERIOD	10
2.1. Historical Dams in Other Parts of the World in III.-II. Millenia B.C.	10
2.2. Karakuyu Dam in Uzunyayla	11
2.3. Eflatunpınar Dam near Beyşehir	11
2.4. Köylütolu Dam near Ilgın	11
2.5. Yalburt Pond near Ilgın	11
2.6. Gölpınar Dam near Çorum	17
2.7. Güneykale Dam at Boğazkale	17
3. HISTORICAL DAMS IN EASTERN ANATOLIA IN THE URARTU PERIOD	18
3.1. Historical Dams in Other Parts of the World in the First Half of the I. Millenium B.C.	18
3.2. Dams at Keşiş Lake	18
3.3. Dams on Doni Creek	21

3.4. Dam near Muradiye	21
3.5. Dam near Adilcevaz	21
4. HISTORICAL DAMS IN ANATOLIA IN HELLENISTIC, ROMAN, BYZANTINE PERIODS	25
4.1. Historical Dams in Other Parts of the World in the Second Half of the I. Millenium B.C. and in the I. Millenium A.D.	25
4.2. Çevlik Dam near Antakya	26
4.3. Çavdarhisar Dam near Kütahya	32
4.4. Örükaya Dam near Çorum	32
4.5. Böget Dam near Niğde	37
4.6. Ildır Dam near Çeşme	37
4.7. Dara Dams near Mardin	37
4.8. Löstüğün Dam near Amasya	45
4.9. Sihke Dam near Van	45
4.10. Sultan Dam near Van	45
4.11. Faruk Dam near Van	45
5. HISTORICAL DAMS IN THRACE AND ANATOLIA IN THE SELJUKIDE AND OTTOMAN PERIODS	47
5.1. Historical Dams in Other Parts of the World in 11.-19. Centuries A.D.	47
5.2. Seljukide Dams	48

5.3. Topuz Dam in İstanbul	48
5.4. Büyük Dam in İstanbul	57
5.5. Topuzlu Dam in İstanbul	59
5.6. Ayvat Dam in İstanbul	67
5.7. Valide Dam in İstanbul	67
5.8. Kirazlı Dam in İstanbul	72
5.9. Yeni Dam in İstanbul	77
5.10. Şamlar Dam in İstanbul	80
5.11. Maden Dam near Adapazarı	80
5.12. Semalı Dam near Amasya	80
5.13. Elmalı-I Dam in İstanbul	80
6. CONCLUSION	83
REFERENCES	89
INDEX	100



Location of major ancient dams in Turkey.